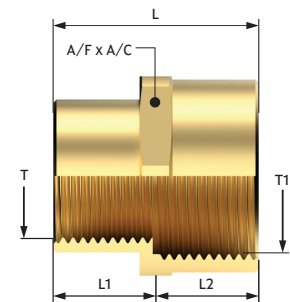
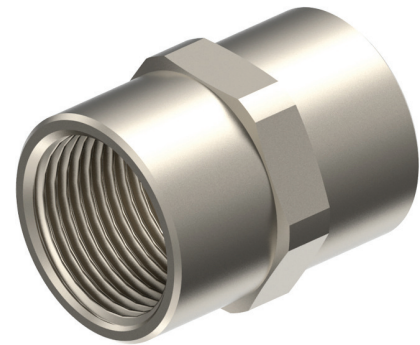


Adaptor Coupling

- Size** : 16mm to 100mm & 3/8" to 3 1/2" NPT/BSP
- Standard** : EN IEC 60079-0:2018, EN/IEC 60079-1:2014, EN IEC 60079-7:2015+A1:2018, IS/IEC 60079-31:2014/2013
- Feature** : We offer a range of adaptors Coupling for industrial and hazardous area application which provide effectiveness connection between cable entry devices and equipment having dissimilar thread. Adaptors are used where the thread size of the cable gland or connection device is larger than, or of an equivalent size, to the entry thread of the enclosure. Converts Feale threads to Female threads. Converts mismatching threads to the required thread.
- IECEX Certificate No.** : IECEX ITS 16.0041X
- ATEX Certificate No.** : ETL22ATEX0109X
- EAC Certificate No.** : RU C-IN.Ж58.B.O3310/22
- PESO Certificate No.** : P568411/1
- CIMFR Certificate No.** : CMF 19 INEX 0006
- Code of Protection** : Ex db IIC Gb, Ex eb IIC Gb, Ex tb IIIC Db
- Area Classification** : Zone 1 of Gas Group IIB/IIC
- Ingress Protection** : Depend upon connecting equipment IP Rating
- Operating Temp.** : -60°C to +135°C
- Material** : Brass CW614N/CW617N/EN12165, SS316L
- Thread** : Metric, NPT, BSP & ET



ADAPTOR COUPLING

METRIC TO METRIC

| Code | Size | A/F | A/C | L1 | L2 | L | T1 | T2 |
|-------|------|-------|-------|-------|-------|-------|---------|---------|
| AC-16 | M16 | 20.00 | 22.00 | 15.00 | 15.00 | 32.00 | M16x1.5 | M16x1.5 |
| AC-20 | M20 | 24.00 | 26.20 | 15.00 | 15.00 | 32.00 | M20x1.5 | M20x1.5 |
| AC-25 | M25 | 30.00 | 33.00 | 15.00 | 15.00 | 32.00 | M25x1.5 | M25x1.5 |
| AC-32 | M32 | 35.00 | 38.00 | 15.00 | 15.00 | 32.00 | M32x1.5 | M32x1.5 |
| AC-40 | M40 | 46.00 | 50.60 | 15.00 | 15.00 | 32.00 | M40x1.5 | M40x1.5 |
| AC-50 | M50 | 55.00 | 60.00 | 15.00 | 15.00 | 32.00 | M50x1.5 | M50x1.5 |
| AC-63 | M63 | 68.00 | 72.00 | 15.00 | 15.00 | 32.00 | M63x1.5 | M63x1.5 |
| AC-75 | M75 | 80.00 | 85.00 | 15.00 | 15.00 | 32.00 | M75x1.5 | M75x1.5 |

ADAPTOR COUPLING

NPT TO NPT

| Code | Size | A/F | A/C | L1 | L2 | L | T1 | T2 |
|---------|-----------|-------|-------|-------|-------|-------|-----------|-----------|
| AC-38N | 3/8 NPT | 20.00 | 22.25 | 15.00 | 15.00 | 32.00 | 3/8 NPT | 3/8 NPT |
| AC-12N | 1/2 NPT | 24.00 | 26.20 | 16.00 | 16.00 | 34.00 | 1/2 NPT | 1/2 NPT |
| AC-34N | 3/4 NPT | 30.00 | 33.00 | 16.00 | 16.00 | 34.00 | 3/4 NPT | 3/4 NPT |
| AC-1N | 1 NPT | 35.00 | 38.00 | 19.00 | 19.00 | 40.00 | 1 NPT | 1 NPT |
| AC-114N | 1 1/4 NPT | 46.00 | 50.60 | 19.00 | 19.00 | 40.00 | 1 1/4 NPT | 1 1/4 NPT |
| AC-112N | 1 1/2 NPT | 55.00 | 60.00 | 21.00 | 21.00 | 44.00 | 1 1/2 NPT | 1 1/2 NPT |
| AC-2N | 2 NPT | 68.00 | 72.00 | 21.00 | 21.00 | 44.00 | 2 NPT | 2 NPT |
| AC-212N | 2 1/2 NPT | 80.00 | 85.00 | 30.00 | 30.00 | 62.00 | 2 1/2 NPT | 2 1/2 NPT |

ADAPTOR COUPLING

BSP TO BSP

| Code | Size | A/F | A/C | L1 | L2 | L | T1 | T2 |
|---------|---------|-------|-------|-------|-------|-------|---------|---------|
| AC-38G | 3/8 G | 20.00 | 22.00 | 15.00 | 15.00 | 32.00 | 3/8 G | 3/8 G |
| AC-12G | 1/2 G | 24.00 | 26.20 | 15.00 | 15.00 | 32.00 | 1/2 G | 1/2 G |
| AC-34G | 3/4 G | 30.00 | 33.00 | 15.00 | 15.00 | 32.00 | 3/4 G | 3/4 G |
| AC-1G | 1 G | 36.00 | 39.20 | 18.00 | 18.00 | 38.00 | 1 G | 1 G |
| AC-114G | 1 1/4 G | 46.00 | 50.60 | 18.00 | 18.00 | 38.00 | 1 1/4 G | 1 1/4 G |
| AC-112G | 1 1/2 G | 55.00 | 60.00 | 18.00 | 18.00 | 38.00 | 1 1/2 G | 1 1/2 G |
| AC-2G | 2 G | 68.00 | 72.00 | 18.00 | 18.00 | 38.00 | 2 G | 2 G |
| AC-212G | 2 1/2 G | 80.00 | 85.00 | 18.00 | 18.00 | 38.00 | 2 1/2 G | 2 1/2 G |

ADAPTOR COUPLING

METRIC TO NPT

| Code | Size | A/F | A/C | L1 | L2 | L | T1 | T2 |
|-----------|-------------|-------|-------|-------|-------|-------|---------|----------|
| AC-16-38N | 16-3/8" NPT | 24.00 | 26.20 | 15.00 | 16.00 | 16.00 | M16x1.5 | 3/8" NPT |
| AC-16-12N | 16-1/2" NPT | 24.00 | 26.20 | 15.00 | 16.00 | 16.00 | M16x1.5 | 1/2" NPT |
| AC-20-12N | 20-1/2" NPT | 24.00 | 26.20 | 15.00 | 16.00 | 16.00 | M20x1.5 | 1/2" NPT |
| AC-20-34N | 20-3/4" NPT | 32.00 | 35.00 | 15.00 | 16.00 | 16.00 | M20x1.5 | 3/4" NPT |
| AC-25-34N | 25-3/4" NPT | 32.00 | 35.00 | 15.00 | 16.00 | 16.00 | M25x1.5 | 3/4" NPT |
| AC-25-1N | 25-1" NPT | 38.00 | 42.00 | 15.00 | 19.00 | 18.00 | M25x1.5 | 1" NPT |



ADAPTOR COUPLING

METRIC TO NPT

| Code | Size | A/F | A/C | L1 | L2 | L | T1 | T2 |
|------------|------------|-------|-------|-------|-------|-------|---------|---------|
| AC-32-1N | 32-1" NPT | 38.00 | 42.00 | 15.00 | 19.00 | 18.00 | M32x1.5 | 1" NPT |
| AC-32-114N | 32-1¼" NPT | 46.00 | 50.60 | 15.00 | 19.00 | 19.00 | M32x1.5 | 1¼" NPT |
| AC-40-114N | 40-1¼" NPT | 46.00 | 50.60 | 15.00 | 19.00 | 19.00 | M40x1.5 | 1¼" NPT |
| AC-40-112N | 40-1½" NPT | 55.00 | 60.00 | 15.00 | 21.00 | 19.00 | M40x1.5 | 1½" NPT |
| AC-50-112N | 50-1½" NPT | 55.00 | 60.00 | 15.00 | 21.00 | 19.00 | M50x1.5 | 1½" NPT |
| AC-50-2N | 50-2" NPT | 65.00 | 70.00 | 15.00 | 21.00 | 19.00 | M50x1.5 | 2" NPT |
| AC-63-2N | 63-2" NPT | 68.00 | 72.00 | 15.00 | 21.00 | 19.00 | M63x1.5 | 2" NPT |
| AC-63-212N | 63-2½" NPT | 80.00 | 85.00 | 15.00 | 30.00 | 25.00 | M63x1.5 | 2½" NPT |
| AC-75-212N | 75-2½" NPT | 80.00 | 85.00 | 15.00 | 30.00 | 25.00 | M75x1.5 | 2½" NPT |

ADAPTOR COUPLING

METRIC TO BSP

| Code | Size | A/F | A/C | L1 | L2 | L | T1 | T2 |
|------------|---------|-------|-------|-------|-------|-------|---------|------|
| AC-16-38G | 16-¾"G | 24.00 | 26.20 | 15.00 | 15.00 | 30.00 | M16x1.5 | ¾"G |
| AC-16-12G | 16-½"G | 24.00 | 26.20 | 15.00 | 15.00 | 30.00 | M16x1.5 | ½"G |
| AC-20-12G | 20-½"G | 24.00 | 26.20 | 15.00 | 15.00 | 30.00 | M20x1.5 | ½"G |
| AC-20-34G | 20-¾"G | 32.00 | 35.00 | 15.00 | 15.00 | 30.00 | M20x1.5 | ¾"G |
| AC-25-34G | 25-¾"G | 32.00 | 35.00 | 15.00 | 15.00 | 30.00 | M25x1.5 | ¾"G |
| AC-25-1G | 25-1"G | 38.00 | 42.00 | 15.00 | 18.00 | 33.00 | M25x1.5 | 1"G |
| AC-32-1G | 32-1"G | 38.00 | 42.00 | 15.00 | 18.00 | 33.00 | M32x1.5 | 1"G |
| AC-32-114G | 32-1¼"G | 46.00 | 50.60 | 15.00 | 18.00 | 33.00 | M32x1.5 | 1¼"G |
| AC-40-114G | 40-1¼"G | 46.00 | 50.60 | 15.00 | 18.00 | 33.00 | M40x1.5 | 1¼"G |
| AC-40-112G | 40-1½"G | 55.00 | 60.00 | 15.00 | 18.00 | 33.00 | M40x1.5 | 1½"G |
| AC-50-112G | 50-1½"G | 55.00 | 60.00 | 15.00 | 18.00 | 33.00 | M50x1.5 | 1½"G |
| AC-50-2G | 50-2"G | 65.00 | 70.00 | 15.00 | 18.00 | 33.00 | M50x1.5 | 2"G |
| AC-63-2G | 63-2"G | 68.00 | 72.00 | 15.00 | 18.00 | 33.00 | M63x1.5 | 2"G |
| AC-63-212G | 63-2½"G | 80.00 | 85.00 | 15.00 | 18.00 | 33.00 | M63x1.5 | 2½"G |
| AC-75-212G | 75-2½"G | 80.00 | 85.00 | 15.00 | 18.00 | 33.00 | M75x1.5 | 2½"G |

ADAPTOR COUPLING

METRIC TO METRIC (REDUCING)

| Code | Size | A/F | A/C | L1 | L2 | L | T1 | T2 |
|----------|---------|-------|-------|-------|-------|-------|---------|---------|
| AC-16-20 | M16-M20 | 24.00 | 26.20 | 15.00 | 15.00 | 30.00 | M16x1.5 | M20x1.5 |
| AC-20-25 | M20-M25 | 32.00 | 35.00 | 15.00 | 15.00 | 30.00 | M20x1.5 | M25x1.5 |
| AC-25-32 | M25-M32 | 38.00 | 42.00 | 15.00 | 15.00 | 30.00 | M25x1.5 | M32x1.5 |
| AC-32-40 | M32-M40 | 46.00 | 50.60 | 15.00 | 15.00 | 30.00 | M32x1.5 | M40x1.5 |
| AC-40-50 | M40-M50 | 55.00 | 60.00 | 15.00 | 15.00 | 30.00 | M40x1.5 | M50x1.5 |
| AC-50-63 | M50-M63 | 65.00 | 70.00 | 15.00 | 15.00 | 30.00 | M50x1.5 | M63x1.5 |
| AC-63-75 | M63-M75 | 80.00 | 85.00 | 15.00 | 15.00 | 30.00 | M63x1.5 | M75x1.5 |

ADAPTOR COUPLING

NPT TO NPT (REDUCING)

| Code | Size | A/F | A/C | L1 | L2 | L | T1 | T2 |
|--------------|---------------|-------|-------|-------|-------|-------|--------|--------|
| AC-38N-12N | ¾ NPT-½ NPT | 24.00 | 26.20 | 15.00 | 16.00 | 31.00 | ¾ NPT | ½ NPT |
| AC-12N-34N | ½ NPT-¾ NPT | 32.00 | 35.00 | 16.00 | 16.00 | 32.00 | ½ NPT | ¾ NPT |
| AC-34N-1N | ¾ NPT-1 NPT | 38.00 | 42.00 | 16.00 | 18.00 | 34.00 | ¾ NPT | 1 NPT |
| AC-1N-114N | 1 NPT-1¼ NPT | 46.00 | 50.60 | 18.00 | 19.00 | 37.00 | 1 NPT | 1¼ NPT |
| AC-114N-112N | 1¼ NPT-1½ NPT | 55.00 | 60.00 | 19.00 | 19.00 | 38.00 | 1¼ NPT | 1½ NPT |
| AC-112N-2N | 1½ NPT-2 NPT | 65.00 | 70.00 | 19.00 | 19.00 | 38.00 | 1½ NPT | 2 NPT |
| AC-2N-212N | 2 NPT-2½ NPT | 80.00 | 85.00 | 19.00 | 25.00 | 44.00 | 2 NPT | 2½ NPT |

ADAPTOR COUPLING

BSP TO BSP (REDUCING)

| Code | Size | A/F | A/C | L1 | L2 | L | T1 | T2 |
|--------------|---------|-------|-------|-------|-------|-------|--------|--------|
| AC-38G-12G | ¾G-½G | 24.00 | 26.20 | 15.00 | 15.00 | 30.00 | ¾ BSP | ½ BSP |
| AC-12G-34G | ½G-¾G | 32.00 | 35.00 | 15.00 | 15.00 | 30.00 | ½ BSP | ¾ BSP |
| AC-34G-1G | ¾G-1G | 38.00 | 42.00 | 18.00 | 15.00 | 33.00 | ¾ BSP | 1 BSP |
| AC-1G-114G | 1G-1¼G | 46.00 | 50.60 | 18.00 | 18.00 | 36.00 | 1 BSP | 1¼ BSP |
| AC-114G-112G | 1¼G-1½G | 55.00 | 60.00 | 18.00 | 18.00 | 36.00 | 1¼ BSP | 1½ BSP |
| AC-112G-2G | 1½G-2G | 65.00 | 70.00 | 18.00 | 18.00 | 36.00 | 1½ BSP | 2 BSP |
| AC-2G-212G | 2G-2½G | 80.00 | 85.00 | 18.00 | 18.00 | 36.00 | 2 BSP | 2½ BSP |



| ADAPTOR COUPLING | | | | | | | ET TO ET | |
|------------------|-------|-------|-------|-------|-------|-------|----------|-------|
| Code | Size | A/F | A/C | L1 | L2 | L | T1 | T2 |
| AC-34ET | ¾"ET | 24.00 | 26.20 | 15.00 | 15.00 | 32.00 | ¾"ET | ¾"ET |
| AC-1ET | 1"ET | 30.00 | 33.00 | 15.00 | 15.00 | 32.00 | 1"ET | 1"ET |
| AC-114ET | 1¼"ET | 35.00 | 38.00 | 15.00 | 15.00 | 32.00 | 1¼"ET | 1¼"ET |
| AC-112ET | 1½"ET | 44.00 | 49.00 | 15.00 | 15.00 | 32.00 | 1½"ET | 1½"ET |
| AC-2ET | 2"ET | 55.00 | 60.00 | 15.00 | 15.00 | 32.00 | 2"ET | 2"ET |
| AC-212ET | 2½"ET | 68.00 | 73.00 | 15.00 | 15.00 | 32.00 | 2½"ET | 2½"ET |
| AC-3ET | 3"ET | 80.00 | 85.00 | 15.00 | 15.00 | 32.00 | 3"ET | 3"ET |

| ADAPTOR COUPLING | | | | | | | ET TO ET (REDUCING) | |
|------------------|---------------|-------|-------|-------|-------|-------|---------------------|-------|
| Code | Size | A/F | A/C | L1 | L2 | L | T1 | T2 |
| AC-34ET-1ET | ¾"ET x 1"ET | 32.00 | 35.00 | 15.00 | 15.00 | 30.00 | ¾"ET | 1"ET |
| AC-1ET-114ET | 1"ET x 1¼"ET | 38.00 | 42.00 | 15.00 | 15.00 | 30.00 | 1"ET | 1¼"ET |
| AC-114ET-112ET | 1¼"ET x 1½"ET | 46.00 | 50.60 | 15.00 | 15.00 | 30.00 | 1¼"ET | 1½"ET |
| AC-112ET-2ET | 1½"ET x 2"ET | 55.00 | 60.00 | 15.00 | 15.00 | 30.00 | 1½"ET | 2"ET |
| AC-2ET-212ET | 2"ET x 2½"ET | 65.00 | 70.00 | 15.00 | 15.00 | 30.00 | 2"ET | 2½"ET |
| AC-212ET-3ET | 2½"ET x 3"ET | 80.00 | 85.00 | 15.00 | 15.00 | 30.00 | 2½"ET | 3"ET |

| ADAPTOR COUPLING | | | | | | | METRIC TO ET | |
|------------------|------------|-------|-------|-------|-------|-------|--------------|-------|
| Code | Size | A/F | A/C | L1 | L2 | L | T1 | T2 |
| AC-20-34ET | M20 x¾"ET | 24.00 | 26.20 | 15.00 | 15.00 | 33.00 | M20x1.5 | ¾"ET |
| AC-25-1ET | M25 x1"ET | 32.00 | 35.00 | 15.00 | 15.00 | 33.00 | M25x1.5 | 1"ET |
| AC-32-114ET | M32 x1¼"ET | 38.00 | 42.00 | 15.00 | 15.00 | 33.00 | M32x1.5 | 1¼"ET |
| AC-40-112ET | M40 x1½"ET | 46.00 | 50.60 | 15.00 | 15.00 | 33.00 | M40x1.5 | 1½"ET |
| AC-50-2ET | M50 x2"ET | 55.00 | 60.00 | 15.00 | 15.00 | 33.00 | M50x1.5 | 2"ET |
| AC-63-212ET | M63 x2½"ET | 68.00 | 73.00 | 15.00 | 15.00 | 33.00 | M63x1.5 | 2½"ET |
| AC-75-3ET | M75 x3"ET | 80.00 | 85.00 | 15.00 | 15.00 | 33.00 | M75x1.5 | 3"ET |

| ADAPTOR COUPLING | | | | | | | BSP (G) TO ET | |
|------------------|----------------|-------|-------|-------|-------|-------|---------------|-------|
| Code | Size | A/F | A/C | L1 | L2 | L | T1 | T2 |
| AC-12G-34ET | ½" BSP x¾"ET | 24.00 | 26.20 | 15.00 | 15.00 | 33.00 | ½" BSP | ¾"ET |
| AC-34G-1ET | ¾" BSP x1"ET | 32.00 | 35.00 | 15.00 | 15.00 | 33.00 | ¾" BSP | 1"ET |
| AC-1G-114ET | 1" BSP x1¼"ET | 38.00 | 42.00 | 18.00 | 15.00 | 33.00 | 1" BSP | 1¼"ET |
| AC-114G-112ET | 1¼" BSP x1½"ET | 46.00 | 50.60 | 18.00 | 15.00 | 33.00 | 1¼" BSP | 1½"ET |
| AC-112G-2ET | 1½" BSP x2"ET | 55.00 | 60.00 | 18.00 | 15.00 | 33.00 | 1½" BSP | 2"ET |
| AC-2G-212ET | 2" BSP x2½"ET | 68.00 | 73.00 | 18.00 | 15.00 | 33.00 | 2" BSP | 2½"ET |
| AC-7212G-3ET | 2½" BSP x3"ET | 80.00 | 85.00 | 18.00 | 15.00 | 33.00 | 2½" BSP | 3"ET |

| PRODUCT CODE FOR ORDERING PURPOSE | | | | |
|-----------------------------------|-----------------------------------|-----------------------------------|-------------------|-------------|
| Type | Male Thread Size (T) | Female Thread Size (T1) | Material | Accessories |
| AC | Metric... e.g. 20...(for M20) | Metric... e.g. 20...(for M20) | Brass-1 | Lock Nut-5 |
| | NPT (N)... e.g. 12N...(for ½ NPT) | NPT (N)... e.g. 12N...(for ½ NPT) | Stainless Steel-2 | IP Washer-6 |
| | BSP (G)... e.g. 12G...(for ½ BSP) | BSP (G)... e.g. 12G...(for ½ BSP) | Nickel Plated-3 | |
| | ET... e.g. 34ET...(for ¾ ET) | ET... e.g. 34ET...(for ¾ ET) | | |

| ORDERING INFORMATION | |
|--|---|
| Code : AC-16-1 / AC-16-12N-1 - M16xM16 Brass Adaptor Coupling - M16x½" NPT Brass Adaptor Coupling | AC =Adaptor Coupling, 16 =Female Thread Size (M16), 12N=Female Thread Size (½ NPT), 1= With Brass Material, |