

### Explosion-Proof Support Brackets for Thermal Insulation

**Function & Feature :**

- Support brackets make it possible to insert a heating cable under the layer of thermal insulation. This simplifies the mounting and prevents damage of heating cable. The design of explosion-proof support bracket makes it convenient to install them on the conduit with round cross-section.
- Increased diameter of the support bracket as well as use of fiber glass-reinforced shock resistant antistatic with addition of graphite as the material ensure resistance to shock loads.
- Explosion-proof support brackets are installed on the conduit by means of two metal fastening clamps.
- Support brackets are used as a part of finished explosion-proof boxes for connection of power supply to the heating accessories under the thermal insulation.

**Ingress Protection :** IP66/67

**Operating Temp. :** -40°C to +135°C

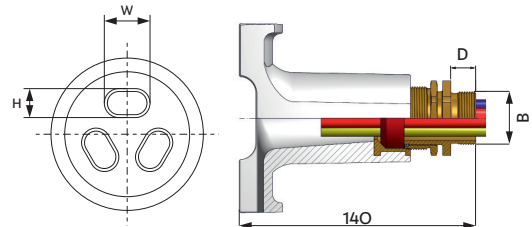
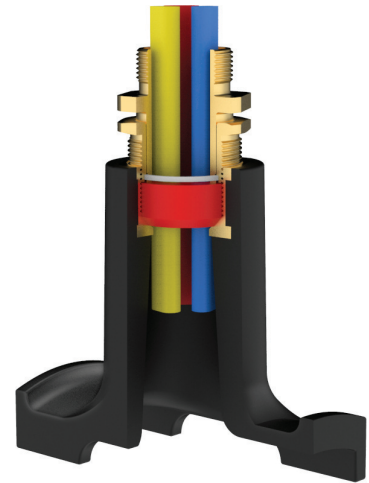
**Material :** Impact resistant antistatic polyester with the addition of graphite, reinforced with long fiberglass fibers , chemically resistant to process media and resistant to UV radiation.

**Height of bracket :** 140mm

**Seal Material :** LSOH Silicone Seal & Nylon Washer

**Code of Protection :** Ex e II Gb U, Ex ia IIC Ga U

**Fixation on pipe :** 1 Fastening Clamp on Pipe



### SELECTION CHART

Size	Conduit Connection Thread "B"		Optional Conduit Connection Thread "B"		Thread Length (D)	Cable Range HxW		Cable Dia. A	
	Metric	NPT/BSP	Metric	NPT/BSP		Min.	Max.	Min.	Max.
32s	M32x1.5	1"	M40x1.5	1 1/4"	15.00	4.0 x 6.2	6.8 x 11.7	-	-
32	M32x1.5	1"	M40x1.5	1 1/4"	15.00	5.7 x 8.0	8.7 x 13.5	-	-
32*	M32x1.5	1"	M40x1.5	1 1/4"	15.00	-	-	17.00	26.20

\* Only for rounded outer sheaths cable

### PRODUCT CODE FOR ORDERING PURPOSE

Size	Type	Thread Type
32s	HSC	Standard Metric-11
		Standard NPT-12
		Standard BSP(G)-15
		Optional Metric-16
		Optional NPT-17
		Optional BSP-20

### ORDERING INFORMATION

**Code:** 32sHSC11  
32sHSC with metric threaded conduit

**Code:** 32sHSC12  
32sHSC with NPT threaded conduit