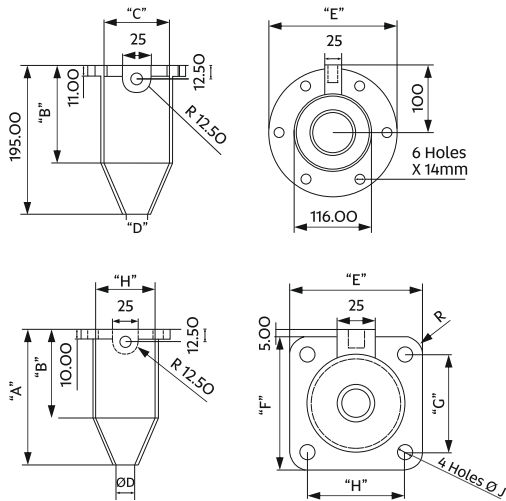


Wiping Cable Gland

Size : X, Y and Z
Material : Brass BS 2874
Application : For use with SWA plastic and rubber (Elastomer) sheathed cables. Used in dry indoor conditions.
Accessories : Hot Dip Galvanized Mild Steel Clamp, Neoprene Gasket.



"Z" Type



"X" & "Y" Type



GLAND SELECTION CHART

Gland Size	Dia. Over Metal Sheath of Cable	Dimension in mm									
		A	B	ØC	ØD	E	F	G	H	ØJ	R
X	12 to 51	137	90	60	19	90	90	66	66	12	12
Y	25 to 78	155	95	108	32	114	123	95	86	14	14
YH	25 to 78	150	95	106	28	135	135	104	106	14	14
Z	25 to 94	125	140	108	32	190	100	-	-	44	-

WIPING CABLE GLAND GASKET AND CLAMP

Gasket Material : Neoprene
Clamp Material : Hot Dip Galvanized Mild Steel
Application : For use with Wiping Gland X, Y and Z

PRODUCT CODE FOR ORDERING PURPOSE

Size	Type	Material	Clamp	Gasket
X	Wiping	Brass-1	Hot Dip Galvanized-A	Neoprene Gasket-B

ORDERING INFORMATION

Item Code: XWIPING1AB
 Wiping-X Brass Cable Gland.

X=Gland Size, WIPING=Gland Code,
 1= With Brass Material, A= With Hot Dip Galvanized Clamp,
 B= With Neoprene Gasket.